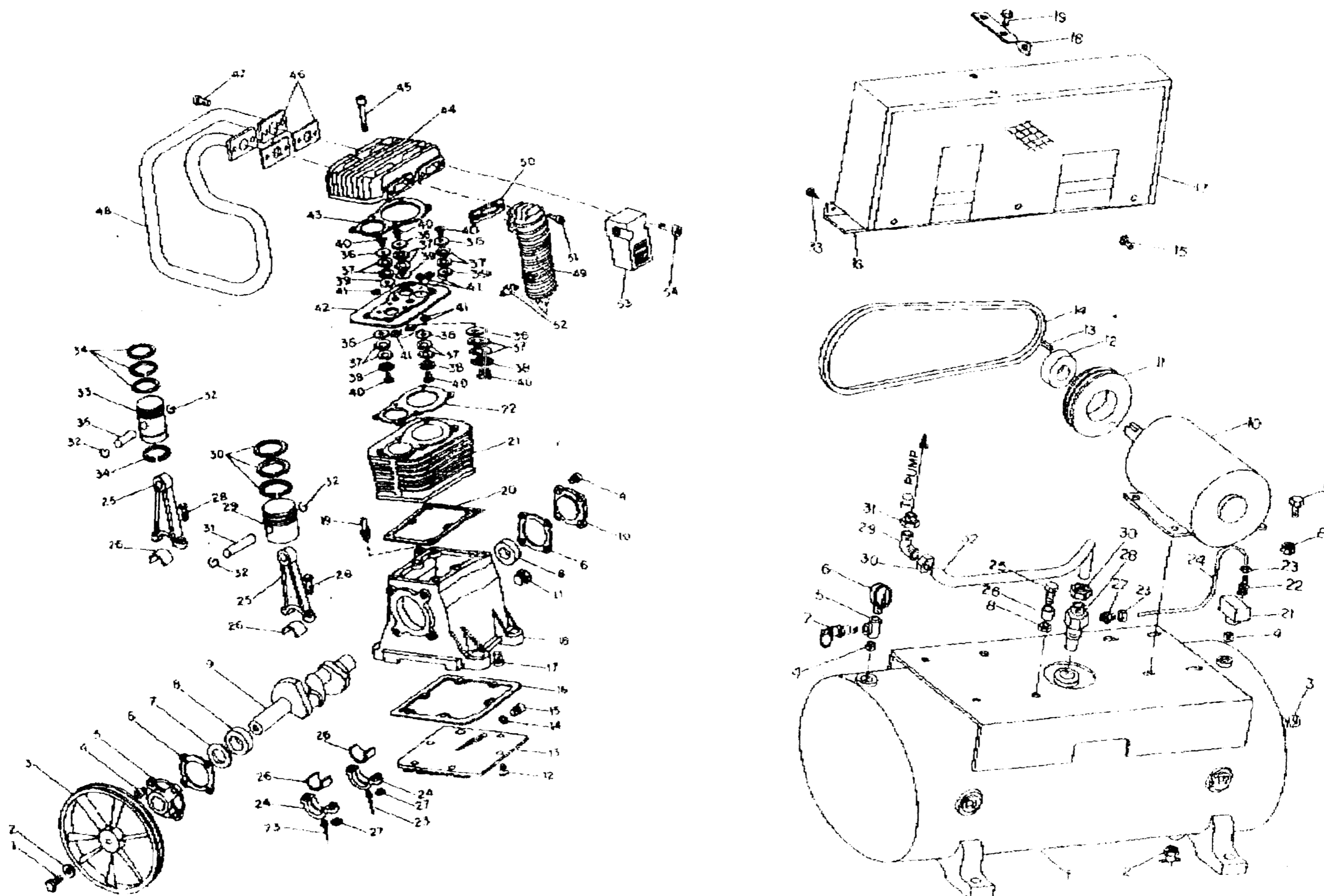


37-1022

PUMP AND TANK ASSEMBLY BREAKDOWN



PUMP ASSEMBLY

COMPLETE PUMP REPLACEMENT PARTS

REF. NO	PART NO.	DESCRIPTION	QTY.
1	059-0138	Flywheel Bolt M10X30mm	1
2	060-0052	Flywheel Washer	1
3	044-0025	Flywheel	1
4	059-0135	Bearing Cover Bolt M6X15mm	8
5	077-0055	Bearing Cover (Flywheel side)	1
6	046-0135	Bearing Cover Gasket	2
7	046-0137	Oil Seal	1
8	051-0039	Crankshaft Bearing	2
9	053-0038	Crankshaft	1
10	077-0053	Bearing Cover (Opp. Flywhl. side)	1
11	032-0019	Sight Glass w/Gasket	1
12	059-0136	Crankcase base bolt M16X15mm	8
13	077-0054	Crankcase Base	1
14	060-0051	Drain Bolt Washer	1
15	059-0137	Drain Bolt M10X16mm	1
16	046-0136	Crankcase Base Gasket	1
17	059-0134	Crkcase to Cyl. Bolt M10X25mm	6
18	049-0021	Crankcase	1
19	056-0013	Oil Filter, Breather w/Gasket	1
20	046-0134	Crankcase Gasket	1
21	050-0025	Cylinder	1
22	046-0139	Cylinder Gasket <i>046-0257</i>	1
23	056-0014	Oil Splash Rod	2
24	047-0040	Connecting Rod Cap	2
25	047-0039	Connecting Rod	2
26	051-0041	Connecting Rod Bearing Inserts	2 pr.
27	058-0072	Connecting rod nut M8	4
28	059-0139	Connecting Rod Bolt M8X45mm	4
29	048-0042	Piston (Low pressure)	1
30	054-0128	Ring Set (Low pressure)	1 set
		Compression Ring-Taper Face	1
		Compression Ring-Stepped	1
		Oil Control Ring	1
31	052-0020	Wrist Pin (Low pressure)	1
32	054-0097	Retaining ring	4
33	048-0043	Piston (High pressure)	1
34	054-0129	Ring Set (High pressure)	1 set
		Compression Ring-Taper face.	1
		Compression Ring-Stepped	1
		Oil Control Ring	2
35	052-0021	Wrist Pin (High pressure)	1
36	155-0022	Valve Disc	6
37	055-0045	Valve Spring	12
38	043-0077	Valve Guide (Intake)	3
39	043-0078	Valve Guide (Outlet)	3
40	059-0133	Valve Screw M8X25mm	6
41	058-0071	Valve Nut M8	6
42	043-0075	Valve Plate	1
43	046-0130	Head Gasket	1
44	042-0043	Cylinder Head	1
45	059-0126	Head Bolts M10X50mm	6
46	046-0198	Intercooler Gasket	2
47	059-0130	Intercooler Bolt M8X20mm	4
48	082-0016	Intercooler Tube	1
49	082-0009	Aftercooler	1
50	046-0131	Aftercooler Gasket	1
51	059-0127	Aftercooler Bolt M10X45mm	2
52	136-0030	Pressure Relief Valve	1
53	018-0104	Air Filter Assembly	1
54	059-0127	Air Filter Bolts	2


040-0107	Complete Pump Assembly B5000	1
165-0068	Complete Overhaul Kit	1
046-0187	Gskt. Set (8, 16, 20, 22, 43)	1
043-0112	Valve Plate Assembly	1

043-0161

TANK ASSEMBLY

TANK ASSEMBLY REPLACEMENT PARTS

ITEM	PART NO.	DESCRIPTION	QTY.
1	021-0022	60 Gallon Horizontal Tank	1
2	021-0025	60 Gallon Vertical Tank	1
3	021-0023	80 Gallon Horizontal Tank	1
4	021-0026	80 Gallon Vertical Tank	1
5	072-0001	1/2" Drain Petcock	1
6	082-0006	3/4" Pipe Plug	1
7	065-0031	1/2" Close Nipple	1
8	069-0004	1/2" Tee	1
9	032-0004	Gauge 200 PSI	1
10	036-0007	ASME Relief Valve 200 PSI	1
11	058-0006	3/8" Nut	8
12	059-0060	Bolt 3/8" x 1-1/2"	4
13	160-0082	5 HP 1 Phase Mtr. (5 HP 1 Phase models)	1
14	160-0111	5 HP 1 Phase Mtr. (512-A22 models only)	1
15	160-0029	5 HP 3 Phase Mtr. (5 HP 3 Phase models)	1
16	008-0072	Mtr. pulley 6.25 O.D. 2-groove	1
17	004-0001	Sheave 1-1/8" Hub 5 HP 3 Phase models	1
18	146-0007	Key 5/16 x 3/16 x 1-1/4" (1 ph.mdl.)	1
19	146-0011	Key 1/2 Sq. x 1-1/4" (3 ph mdl.)	1
20	007-0030	V-Belt A68	2
21	059-0164	Bolt 3/8 x 3/4" Taprite	3
22	125-0069	Belt Guard Underpan <i>125-0081</i>	1
23	142-0009	Belt Guard	1
24	114-0149	Belt Guard Bracket	1
25	059-0012	Bolt 5/16 x 1/2"	2
26	065-0004	Nipple 1/4 x 2"	1
27	034-0035	Pressure Switch	1
28	136-0013	Bleeder Valve	1
29	058-0017	Compression Nut & Sleeve 1/4"	2
30	145-0050	Bleeder Tube 1/4" O.D.	1
31	059-0118	3/8" x 2 HHCS	4
32	068-0002	Male conn. 1/8 NPT x 1/4 OD Tube	1
33	031-0036	Check Valve	1
34	064-0032	Elbow 90° 1/4" NPT x 1/4" Tube (Horizontal models)	2
35	068-0003	Male conn. 1/4" NPT x 1/4" Tube (Vertical models)	2
36	058-0012	Compression Nut & Sleeve 3/8"	2
37	063-0014	Bushing 1-1/4" x 3/4"	1
38	145-0126	Transfer Tube 3/4" x 26"	1

 145-0126



Vent unit elbow for switch 064-0022

Valve inserts with overhaul